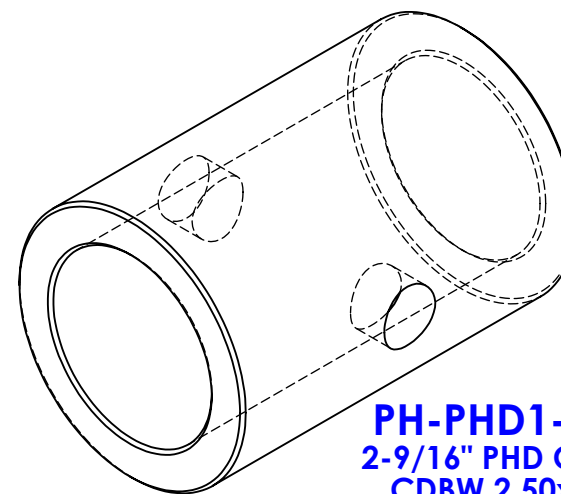
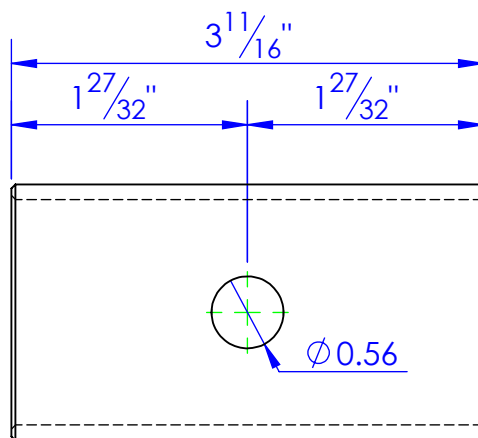
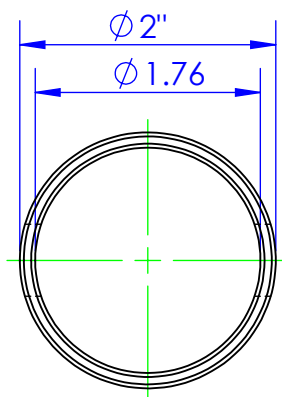
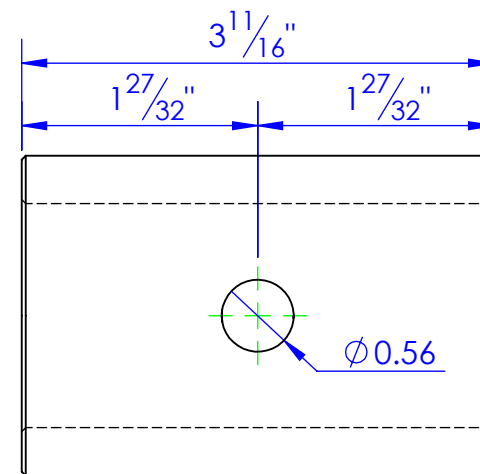
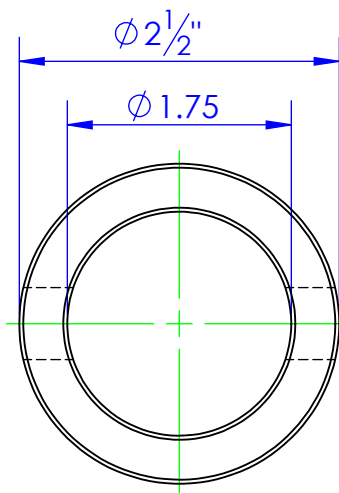
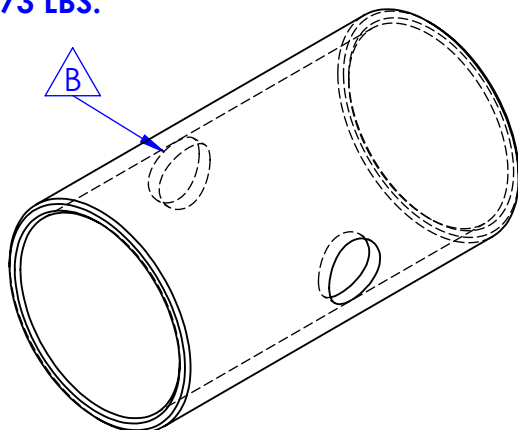


	REVISION			
REV.	DESCRIPTION		DATE	APPROVED
B	UPDATED TO MATCH 3D MODEL		8/31/2012	

PH-PHD1-8-200
2" PHD COUPLER
CDBW 2.00x 1.760
0.73 LBS.



PH-PHD1-8-256
2-9/16" PHD COUPLER
CDBW 2.50x 1.750
2.58 LBS.

PROPRIETARY AND CONFIDENTIAL
THE INFORMATION CONTAINED IN THIS
DRAWING IS THE SOLE PROPERTY OF TRIPLE
C INC. ANY REPRODUCTION IN PART OR
AS A WHOLE WITHOUT THE WRITTEN
PERMISSION OF TRIPLE C INC. IS PROHIBITED.

DIMENSIONS ARE IN INCHES TOLERANCES: FRACTIONAL $\pm 1/16$ ANGULAR: MACH ± 1 BEND \pm TWO PLACE DECIMAL ± 010 THREE PLACE DECIMAL ± 005	
MATERIAL	CDBW 2.00x 1.760
DO NOT SCALE DRAWING	

NAME	DATE
DRAWN HEATH	8/31/2012
PART #	SEE DWG
ASM #	
COMMENTS:	
COUPLERS, HYDRA PHD.	

P.O. BOX 248,
SABETHA, KS 66534

TRIPLE C
INC.

SIZE A	DWG. NO. 60-1104 B	REV. B
SCALE: 1:1.5	WEIGHT:	SHEET 1 OF 1